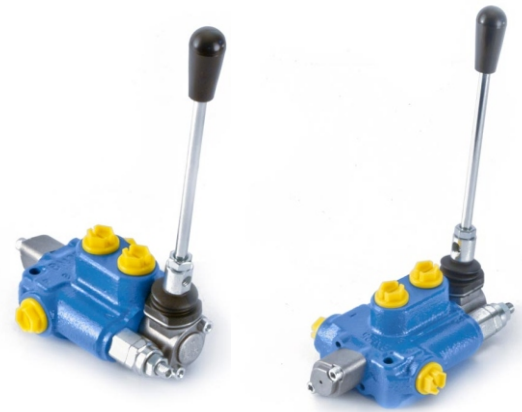


Caratteristiche generali / Technical characteristics

	l/min	GPM
• Portata nominale / Nominal flow	20	5
• Portata limite / Max flow	30	7,5
• Portata limite EO / Max flow EO	25	6,5
	bar	PSI
• Pressione nominale / Nominal pressure	250	3600
• Pressione nominale EO / Nominal pressure EO	180	2600
• Contropressione max allo scarico / Max pressure in tank-line	80	1100



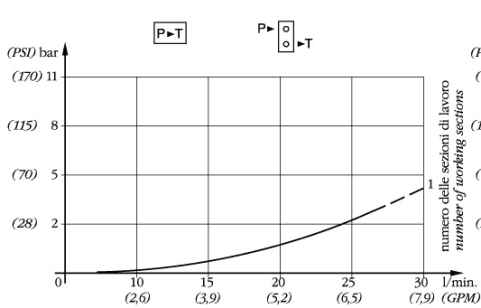
FILETTATURA STANDARD - STANDARD THREADS

COD	A-B	P ₂	T ₂
G	3/8"	3/8"	3/8"
F	3/4" - 16	3/4" - 16	3/4" - 16

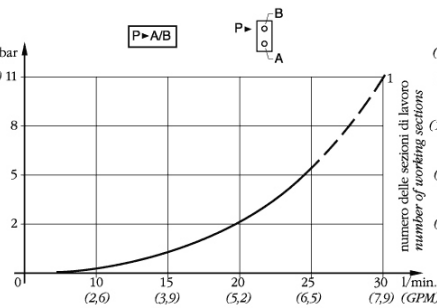
MOD L I Kg

MOD	L	I	Kg
BM25			2,2

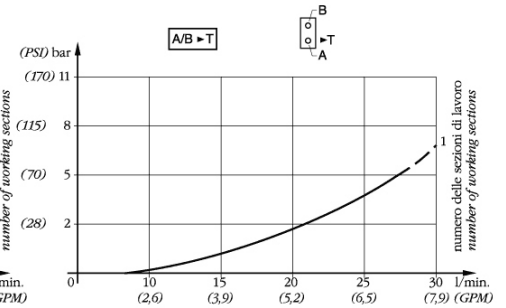
P/T TEMPERATURA OLIO 50 C VISCOSITÀ 3,5 E



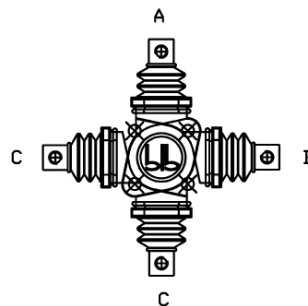
P/A/B TEMPERATURA OLIO 50 C VISCOSITÀ 3,5 E



A/B/T TEMPERATURA OLIO 50 C VISCOSITÀ 3,5 E



BM25/L = ENTRATA SINISTRA (A-B-C)
BM25/L = LEFT INLET (A-B-C)



BM25/R = ENTRATA DESTRA (A-B-C-D)
BM25/R = RIGHT INLET (A-B-C-D)

